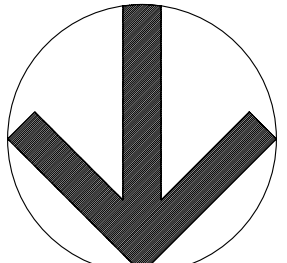
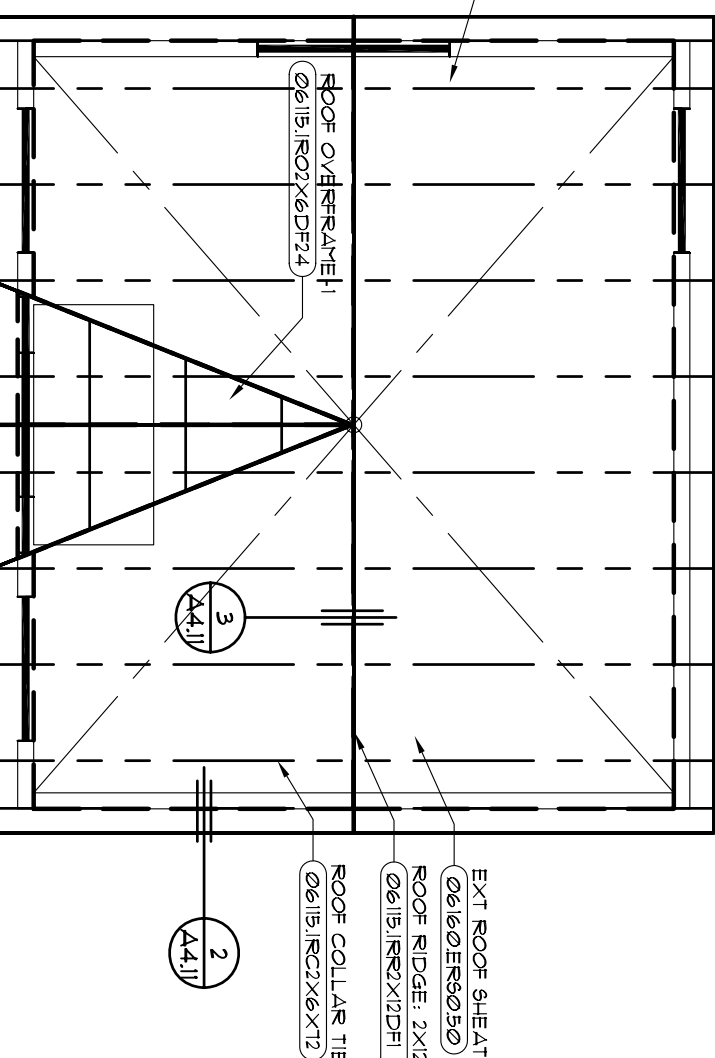
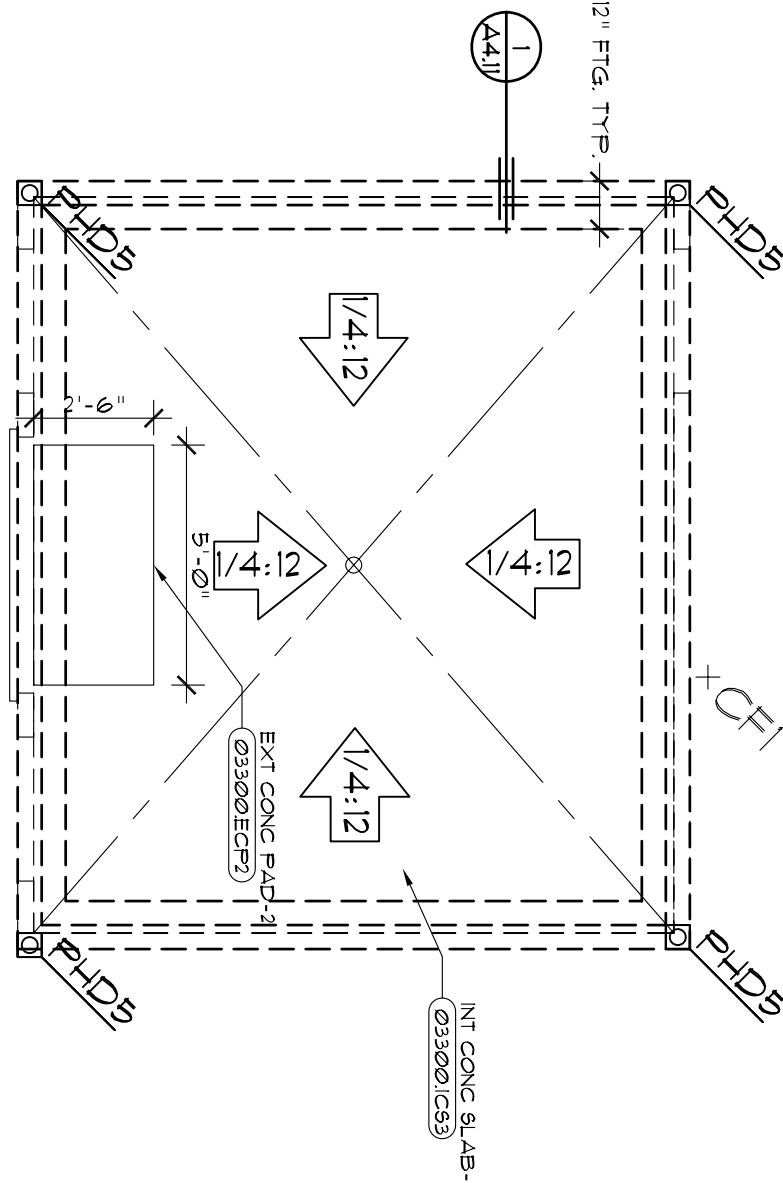
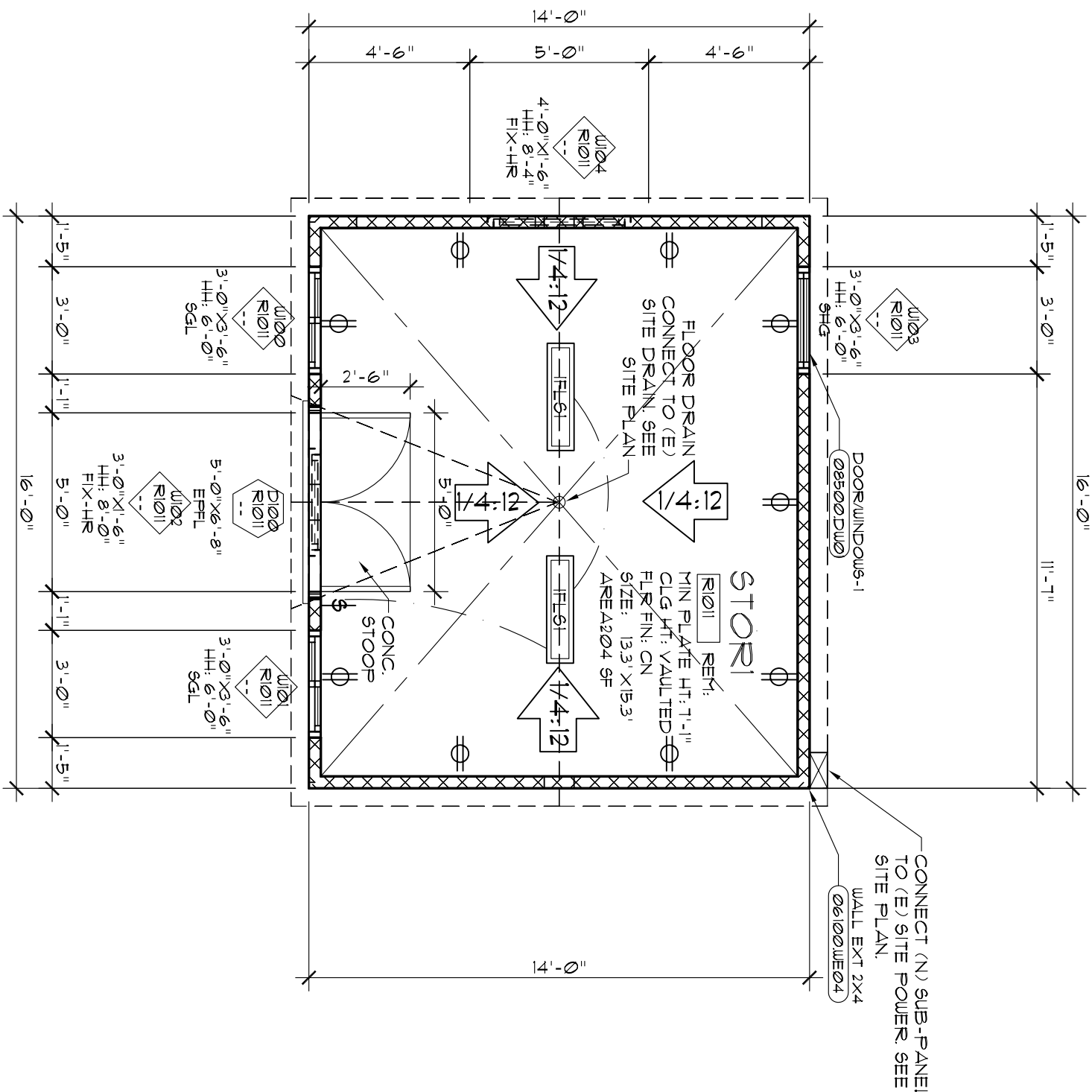


THE CONTRACTOR SHALL VERIFY ALL JOB CONDITIONS AND DIMENSIONS BEFORE BEGINNING WORK.



FLOOR PLAN

SCALE: 0' 1' 2' 4' 8'

2

FOUNDATION PLAN

3

ROOF FRAMING PLAN

4

NOTES:
1. 2' X 6' @ 24" O.C. (TYP.) @ 10'-3" MAX.
2. 2' X 6' @ 24" O.C. (TYP.) @ 15'-8" MAX.
3. 2' X 6' @ 24" O.C. (TYP.) @ 15'-8" MAX.
INSTALL W/ 3'-16" NAIL SPACING LESS THAN 9'-0".
USE SKEELED AND SLOPED 1/8" HANGER AT SPANS GREATER THAN 9'-0".

LEGEND: FLOOR PLAN

(0100) FLOOR FINISH	ROOM NAME, ROOM FINISH, NUMBER, MINIMUM PLATE HEIGHT, CEILING HEIGHT, FLOOR FINISH, ROOM SIZE AND NET AREA. SEE FINISH SCHEDULE SHEETS.
(0200) WINDOW SCHEDULE	WINDOW SYMBOL, SEE WINDOW SCHEDULE SHEET.
(0300) DOOR SCHEDULE	DOOR SYMBOL, SEE DOOR SCHEDULE SHEET.
(0400) OPENING SYMBOL	SEE OPENING SYMBOL.
(0500) OPENING SCHEDULE SHEET	SEE OPENING SCHEDULE SHEET.

(0600) EXTERIOR WALL CONSTRUCTION	2' X 4' DF STUDS @ 16" O.C. FINISH AS SPECIFIED ON FINISH SCHEDULE. INTERIOR SIDE OF EXTERIOR WALLS SHALL BE FINISHED WITH 1/2" GYPSUM BOARD. EXTERIOR FINISH SHALL BE 1/2" GYPSUM BOARD. EXTERIOR WALLS SHALL BE FINISHED WITH 1/2" GYPSUM BOARD. EXTERIOR WALLS SHALL BE FINISHED WITH 1/2" GYPSUM BOARD.
(0700) INTERIOR WALL CONSTRUCTION	2' X 4' DF STUDS @ 16" O.C. FINISH AS SPECIFIED ON FINISH SCHEDULE. INTERIOR SIDE OF INTERIOR WALLS SHALL BE FINISHED WITH 1/2" GYPSUM BOARD. INTERIOR WALLS SHALL BE FINISHED WITH 1/2" GYPSUM BOARD. INTERIOR WALLS SHALL BE FINISHED WITH 1/2" GYPSUM BOARD.
(0800) FLOOR CONSTRUCTION	2' X 4' DF STUDS @ 16" O.C. FINISH AS SPECIFIED ON FINISH SCHEDULE. INTERIOR SIDE OF FLOOR SHALL BE FINISHED WITH 1/2" GYPSUM BOARD. FLOOR SHALL BE FINISHED WITH 1/2" GYPSUM BOARD. FLOOR SHALL BE FINISHED WITH 1/2" GYPSUM BOARD.

FOUNDATION NOTES:

(0100) SLAB	SLAB SLOPE: 1/4" DOWN TYPICAL (UNO.)
(0200) EXTERIOR CONCRETE PAD	2' X 4' THICK CONCRETE PAD (MIN.) @ ALL EXTERIOR CORNERS. PROVIDE 8" MAXIMUM STEP FOR WALKING DOORS.
(0300) INTERIOR CONCRETE PAD	2' X 4' THICK (MIN.) CONC. SLAB WITH 6" X 6" W/ 1/2" MID-SLAB OVER 1/2" GYPSUM BOARD. MOISTURE BARRIER OR EQUAL, AND 4" (MIN.) AGGREGATE BASE. 2' X 4' THICK (MIN.) CONC. SLAB WITH 6" X 6" W/ 1/2" MID-SLAB OVER 1/2" GYPSUM BOARD. MOISTURE BARRIER OR EQUAL, AND 4" (MIN.) AGGREGATE BASE. 2' X 4' THICK (MIN.) CONC. SLAB WITH 6" X 6" W/ 1/2" MID-SLAB OVER 1/2" GYPSUM BOARD.

STRUCTURAL LEGEND: CONTINUOUS FOOTINGS

MARK	FOOTING SIZE	REINFORCEMENT	TRANSVERSE REINFORCEMENT	TYP. FOOTING & TOP & BOTTOM
CH	12" WIDE X 12" DEEP	1/4" CONTINUOUS TOP & BOTTOM	1/4" CONTINUOUS TOP & BOTTOM	1/4" CONTINUOUS TOP & BOTTOM

LEGEND: FRAMING ROOFS

(0100) EXTERIOR ROOF SHEATHING	OVER EXTERIOR SPACE, 1/2" ROOF PLATEWOOD SHEATHING (BEST FACE DOWN) W/ 8d COMMON 6" CC. @ EDGE BOUNDARY AND 12" CC. @ FIELD (TYPICAL).
(0200) ROOF OVERLAP	2' X 6' DF @ 24" O.C. OVERLAP AREA SHALL BE FINISHED WITH 1/2" GYPSUM BOARD. ROOF OVERLAP SHALL BE FINISHED WITH 1/2" GYPSUM BOARD. ROOF OVERLAP SHALL BE FINISHED WITH 1/2" GYPSUM BOARD.
(0300) ROOF RIGID	2' X 6' DF @ 24" O.C. (TYP.)
(0400) ROOF RIGID	2' X 6' DF @ 24" O.C. (TYP.)
(0500) ROOF RIGID	2' X 6' DF @ 24" O.C. (TYP.)
(0600) ROOF RIGID	2' X 6' DF @ 24" O.C. (TYP.)
(0700) ROOF RIGID	2' X 6' DF @ 24" O.C. (TYP.)
(0800) ROOF RIGID	2' X 6' DF @ 24" O.C. (TYP.)
(0900) ROOF RIGID	2' X 6' DF @ 24" O.C. (TYP.)
(1000) ROOF RIGID	2' X 6' DF @ 24" O.C. (TYP.)

LEGEND: ELEVATIONS EXTERIOR

(0100) EXTERIOR GUTTER	2' X 6' DF @ 24" O.C. (TYP.)
(0200) EXTERIOR GUTTER	2' X 6' DF @ 24" O.C. (TYP.)
(0300) EXTERIOR GUTTER	2' X 6' DF @ 24" O.C. (TYP.)
(0400) EXTERIOR GUTTER	2' X 6' DF @ 24" O.C. (TYP.)
(0500) EXTERIOR GUTTER	2' X 6' DF @ 24" O.C. (TYP.)
(0600) EXTERIOR GUTTER	2' X 6' DF @ 24" O.C. (TYP.)
(0700) EXTERIOR GUTTER	2' X 6' DF @ 24" O.C. (TYP.)
(0800) EXTERIOR GUTTER	2' X 6' DF @ 24" O.C. (TYP.)
(0900) EXTERIOR GUTTER	2' X 6' DF @ 24" O.C. (TYP.)
(1000) EXTERIOR GUTTER	2' X 6' DF @ 24" O.C. (TYP.)

ATTIC VENTILATION CALCULATION

(0100) ATTIC AREA	104.18 SQ. FT. ATTIC AREA
(0200) ATTIC AREA	104.18 SQ. FT. ATTIC AREA
(0300) ATTIC AREA	104.18 SQ. FT. ATTIC AREA
(0400) ATTIC AREA	104.18 SQ. FT. ATTIC AREA
(0500) ATTIC AREA	104.18 SQ. FT. ATTIC AREA
(0600) ATTIC AREA	104.18 SQ. FT. ATTIC AREA
(0700) ATTIC AREA	104.18 SQ. FT. ATTIC AREA
(0800) ATTIC AREA	104.18 SQ. FT. ATTIC AREA
(0900) ATTIC AREA	104.18 SQ. FT. ATTIC AREA
(1000) ATTIC AREA	104.18 SQ. FT. ATTIC AREA

LEGEND: ELECTRICAL LIGHTING PLAN

(0100) INTERIOR LIGHTING	INTERIOR LIGHTING SYMBOLS
(0200) INTERIOR LIGHTING	INTERIOR LIGHTING SYMBOLS
(0300) INTERIOR LIGHTING	INTERIOR LIGHTING SYMBOLS
(0400) INTERIOR LIGHTING	INTERIOR LIGHTING SYMBOLS
(0500) INTERIOR LIGHTING	INTERIOR LIGHTING SYMBOLS
(0600) INTERIOR LIGHTING	INTERIOR LIGHTING SYMBOLS
(0700) INTERIOR LIGHTING	INTERIOR LIGHTING SYMBOLS
(0800) INTERIOR LIGHTING	INTERIOR LIGHTING SYMBOLS
(0900) INTERIOR LIGHTING	INTERIOR LIGHTING SYMBOLS
(1000) INTERIOR LIGHTING	INTERIOR LIGHTING SYMBOLS

LEGEND: ELECTRICAL POWER PLAN

(0100) INTERIOR POWER	INTERIOR POWER SYMBOLS
(0200) INTERIOR POWER	INTERIOR POWER SYMBOLS
(0300) INTERIOR POWER	INTERIOR POWER SYMBOLS
(0400) INTERIOR POWER	INTERIOR POWER SYMBOLS
(0500) INTERIOR POWER	INTERIOR POWER SYMBOLS
(0600) INTERIOR POWER	INTERIOR POWER SYMBOLS
(0700) INTERIOR POWER	INTERIOR POWER SYMBOLS
(0800) INTERIOR POWER	INTERIOR POWER SYMBOLS
(0900) INTERIOR POWER	INTERIOR POWER SYMBOLS
(1000) INTERIOR POWER	INTERIOR POWER SYMBOLS

A.P.N.201-0470-004

Project Owner:
DAVID WEBB
5511 NORTHBOROUGH DRIVE
SACRAMENTO, CA 95835
TEL: (916) 214-9322
FAX: ----

SACRAMENTO DESIGN GROUP
3301 SUNRISE BLVD., RANCHO CORDOVA, CA 95742
PHONE: (877) 581-0866 FAX: (877) 581-0866
www.SacramentoDesignGroup.com

TITLE: ELEVATIONS - FLOOR PLAN
SHEET: 3.11
SHEET: 3.11
SHEET: 3.11